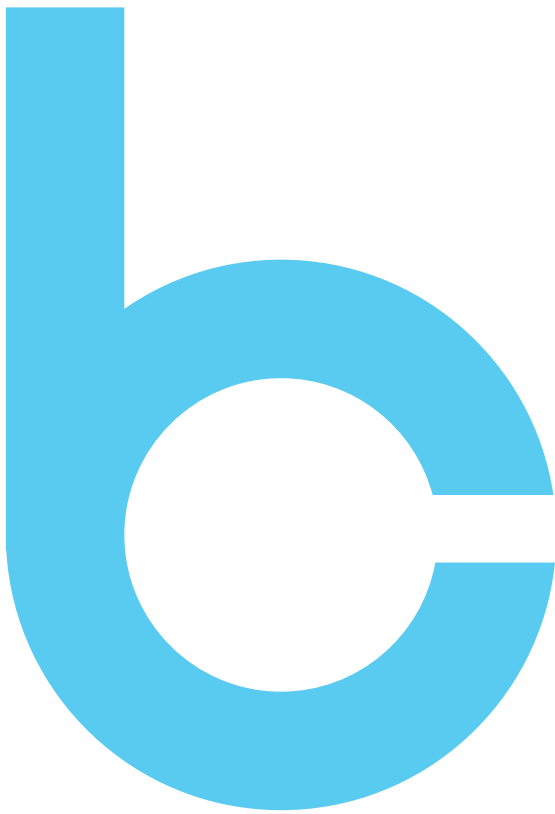
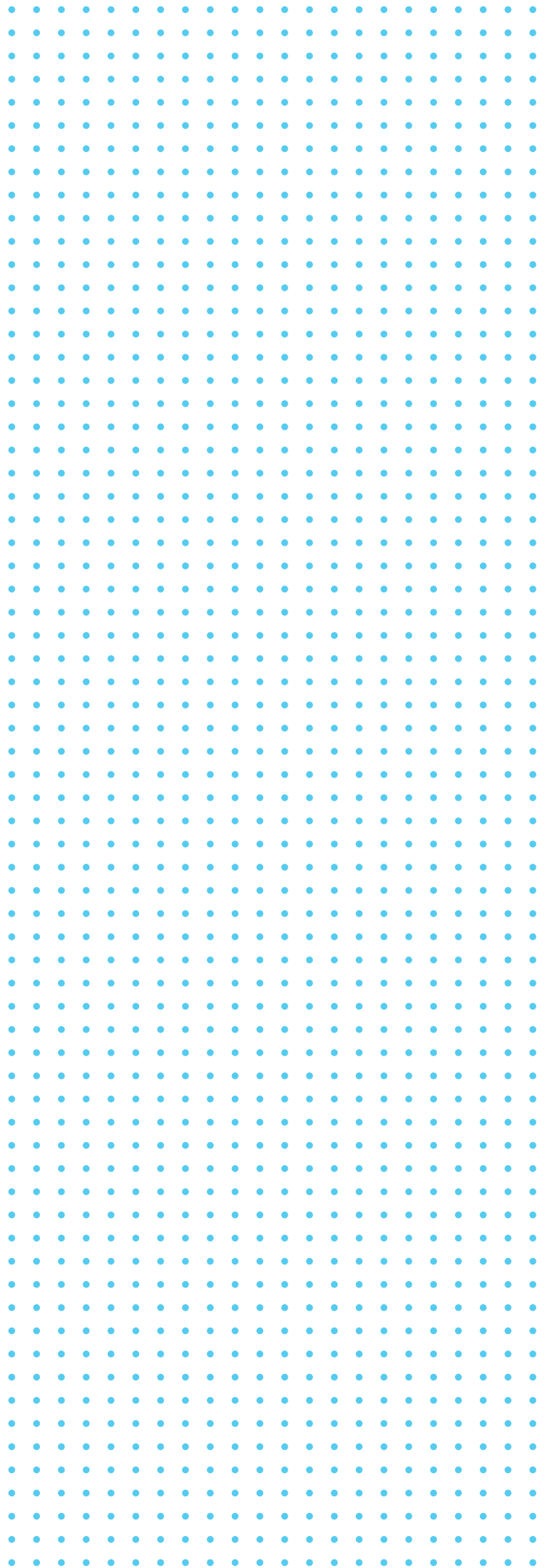


Specialise in polyurethane  
insulated panel, polyisocyanurate  
Insulated panel & refrigeration system



**Chong Brothers**  
Panel System Sdn Bhd





# COMPANY PROFILE

Incorporated in 1992, Chong Brothers specialises in manufacturing polyurethane insulated panel, polyisocyanurate insulated panel & refrigeration system. With more than 2 decades of experience in the industry nationwide, our services are guaranteed safe and of high quality.





# PIR PANEL FEATURES

Polyisocyanurate (PIR) boards are an improved type of Polyurethane (PUR) foam and are proven to have excellent thermal insulation properties. It has high resistance to moisture absorption, resulting in anti fungi growth. These high-quality CFC-free PIR boards are lightweight, hence putting less load on the structure. The proportion of methylene diphenyl diisocyanate (MDI) is greater and a polyester-derived polyol is used in reaction instead of a polyether polyol. This reaction is achieved at higher temperatures which creates strong isocyanurate linkages in the molecular structure. These linkages are much stronger than the normal linkages in the PUR foam, and much more difficult to break, hence making PIR foam chemically more stable.

## PIR PANEL ARE SUITABLE FOR



Cold storage (Chiller/ Freezer)



Warehouse



Laboratory



Production room

## ADVANTAGES OF PIR PANEL



Perfect insulating properties



Fire resistance



Noise insulation



Easy and quick parameters



Good strength



Benefit to the natural environment

# PU PANEL FEATURES

Polyurethane (PU) panels are a food-grade compliance and CFC-free material. Thanks to its superior thermal properties, it is also an effective material on fire retardants. PU panels are perfect for moisture and corrosion resistance. The material also shows high durability due to its high-density mechanical strength.

## PU PANEL ARE SUITABLE FOR



Production Room



Clean Room



Warehouse



Cold storage (Chiller/ Freezer)

## ADVANTAGES OF PU PANEL



Perfect insulating properties



Fire Retardant



Noise insulation



Easy and quick parameters



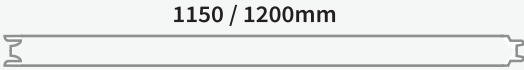
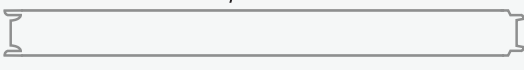


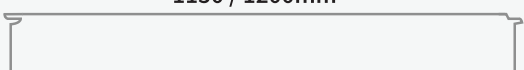
Good strength



Benefit to the natural environment



# PRODUCT DATA

CROSS SECTION	THICKNESS	TEMPERATURE
 1150 / 1200mm 50mm	50mm	+5°C
 1150 / 1200mm 50mm	75mm	-10°C
 1150 / 1200mm 100mm	100mm	-25°C
 1150 / 1200mm 125mm	125mm	-35°C
 1150 / 1200mm 150mm	150mm	-45°C

Note :

- PU panel standard width is 1200mm, length of max 12192mm (40ft).
- PIR panel standard width is 1150mm, length can be customised to desire measurement.

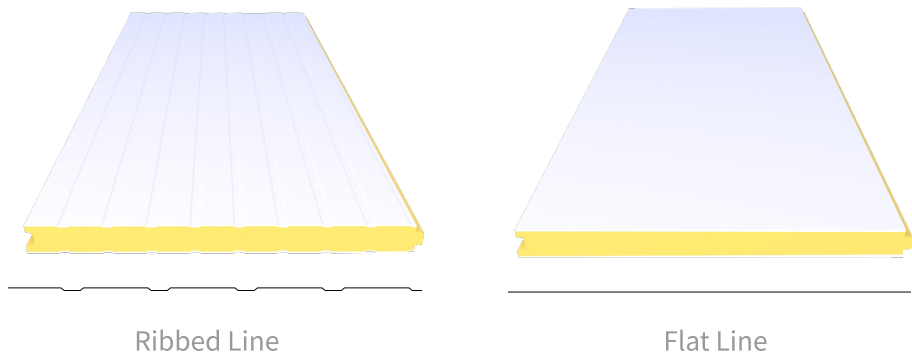
# SPECIFICATIONS

Typical Physical Properties of Sandwich Panel

PROPERTY	TEST METHOD	UNIT	RESULT *
Molded density	ASTM D6226-15	Kg/m <sup>3</sup>	40 ±3
Thermal conductivity	ASTM C518-17	W/mK at 20oC	0.02374
Closed cell content	ASTM D6226-15	%	91.30
Compressive strength	ASTM D1621:2016	kPa	Free rise: 193.50 Perpendicular: 186.39 Parallel: 195.71
Application foam thickness	-	mm	50 to 200
Heat transfer coefficient, U Value	ASTM C518-17	W/m²K	0.4748 to 0.1187
Application temperature	-	°C	-40 to +80

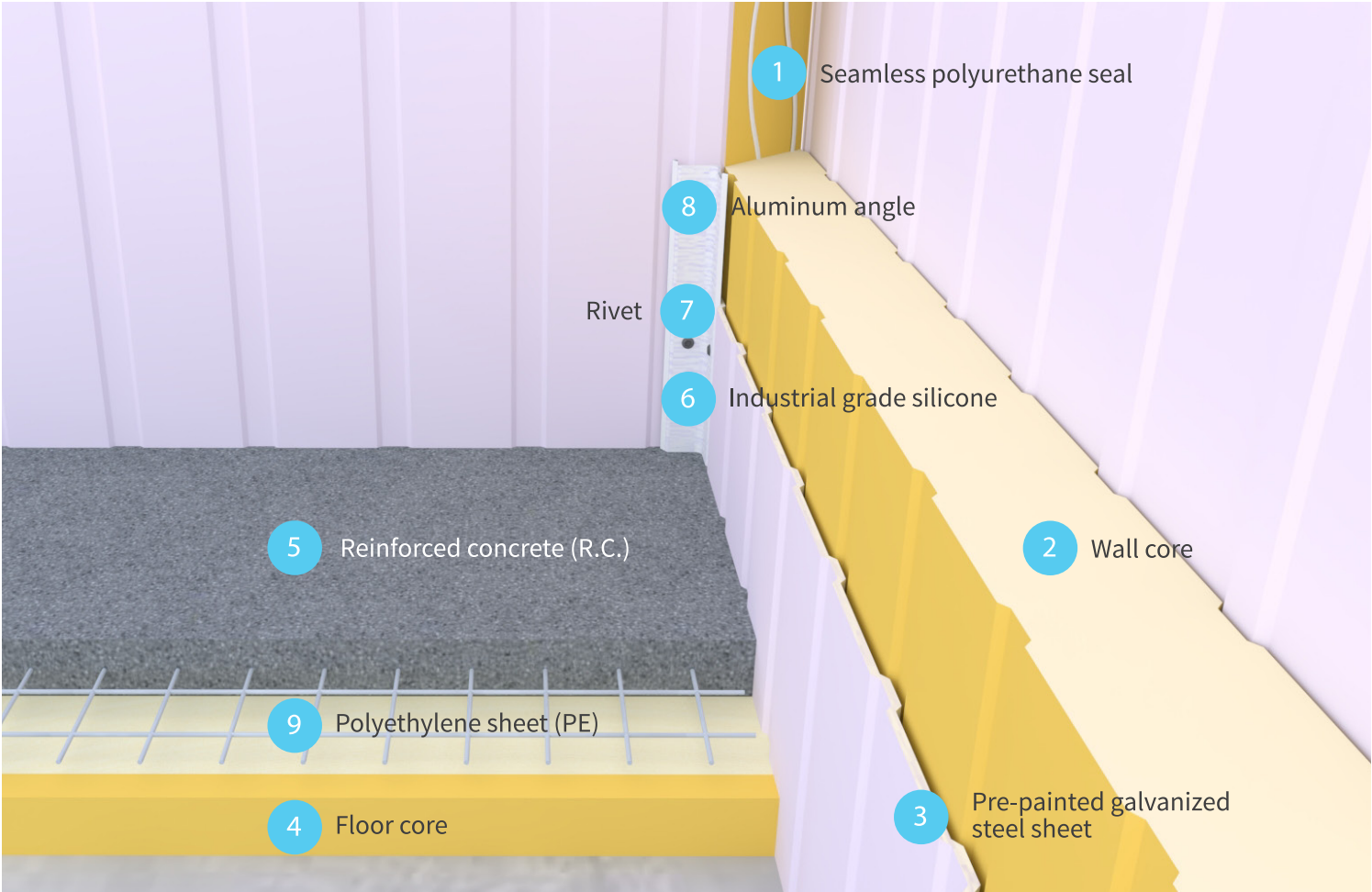
\* Base on sample submitted subjected to standard tests deviations.

## TYPE OF SANDWICH PANEL FINISHES

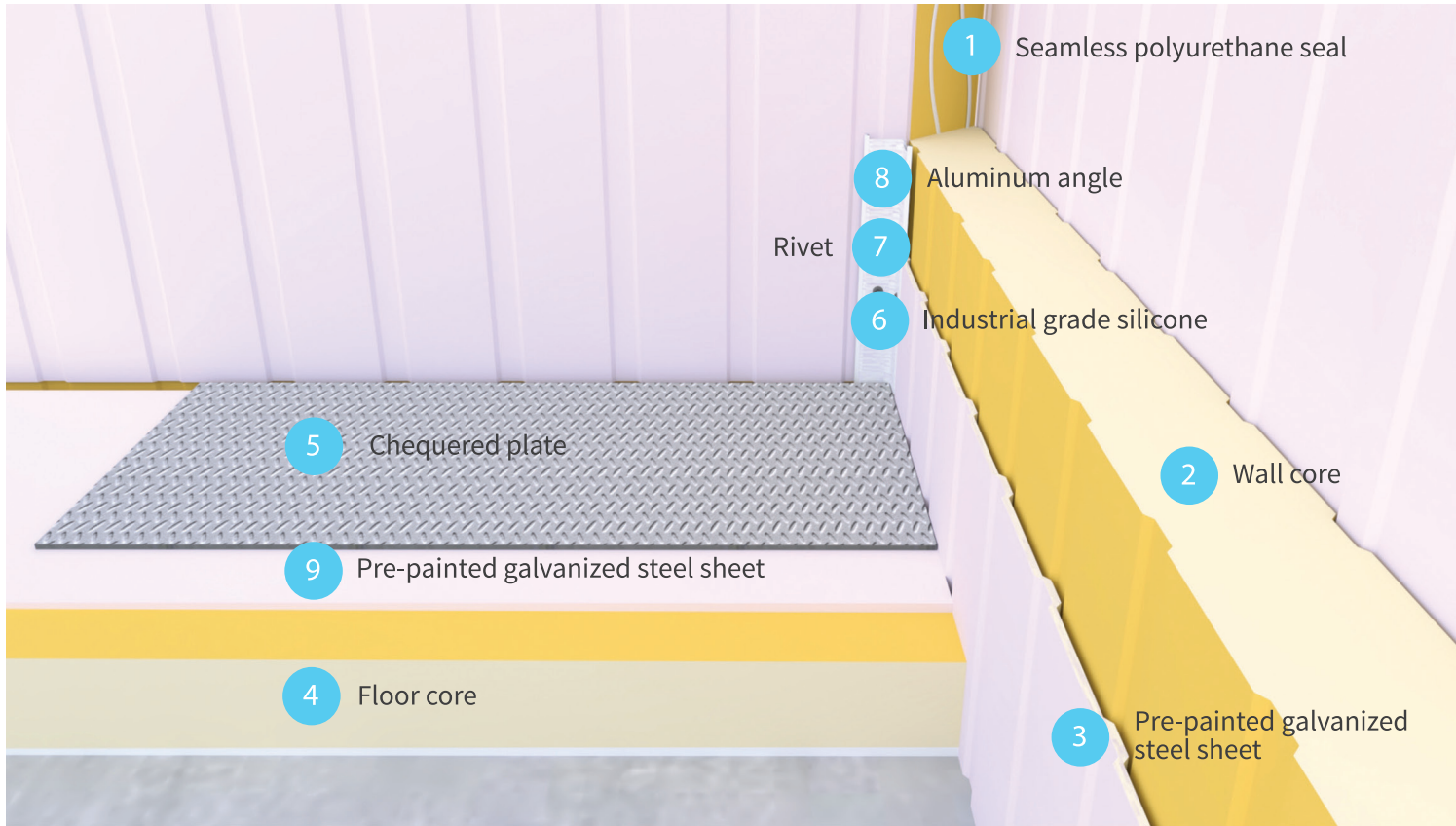


# 3D SECTIONAL

## 3D SECTIONAL (CONCRETE FLOOR)

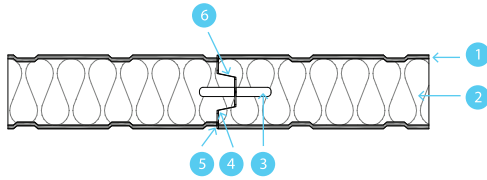


## 3D SECTIONAL (CHEQUERED PLATE)



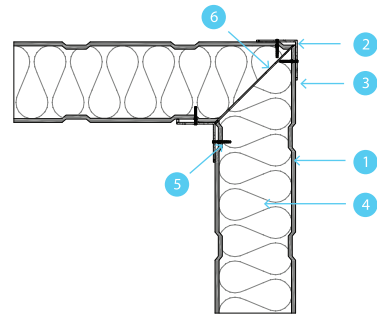


# JOINT DETAIL



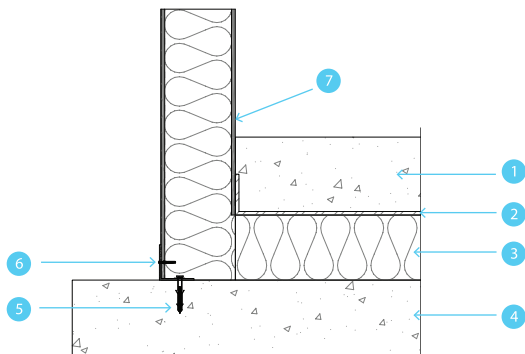
## Wall to Wall

- |              |               |
|--------------|---------------|
| 1 Wall Panel | 4 Mastic      |
| 2 Core       | 5 Silicone    |
| 3 Camlock    | 6 Panel Joint |



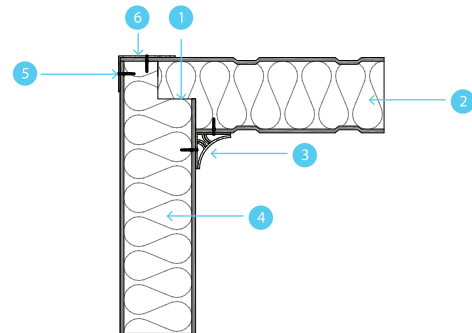
## Wall to Wall Corner

- |               |          |
|---------------|----------|
| 1 Wall Panel  | 4 Core   |
| 2 Alum. Angle | 5 Rivet  |
| 3 Silicone    | 6 Mastic |



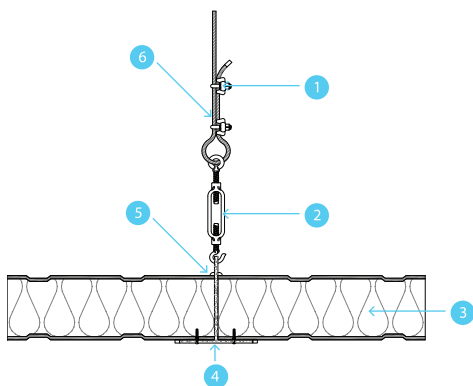
## Wall to Floor Slab

- |                          |              |
|--------------------------|--------------|
| 1 R.C. Slab              | 5 Speed Plug |
| 2 P.E. Sheet             | 6 Rivet      |
| 3 PU. Floor Slab         | 7 Wall Panel |
| 4 Existing Concrete Slab |              |



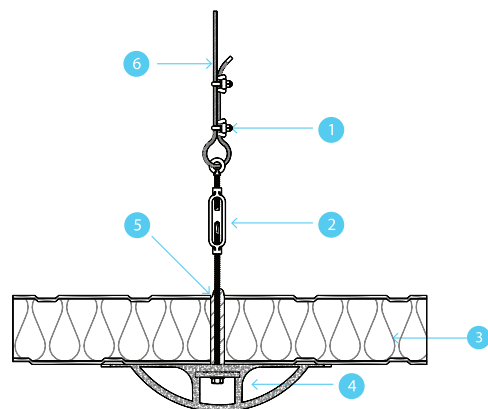
## Wall to Ceiling

- |                 |               |
|-----------------|---------------|
| 1 Panel Joint   | 4 Wall Panel  |
| 2 Ceiling Panel | 5 Rivet       |
| 3 Coving        | 6 Alum. Angle |



## Ceiling Suspension (T Bar)

- |                 |                   |
|-----------------|-------------------|
| 1 Clamp         | 4 T.Bar Alum      |
| 2 Turnbuckle    | 5 Infill Chemical |
| 3 Ceiling Panel | 6 G.I Wire Rope   |



## Ceiling Suspension (Mushroom Head / Bridge)

- |                 |                   |
|-----------------|-------------------|
| 1 Clamp         | 4 Hanging Profile |
| 2 Turnbuckle    | 5 Infill Chemical |
| 3 Ceiling Panel | 6 G.I Wire Rope   |

# DOOR

PVC Swing Door  
Sliding Door  
Overhead Sectional Door  
PVC Strip  
Curtain  
High Speed Door  
Impact Door  
Dock Shelter  
Dock Leveller





# COMPLETED PROJECT



Etika Dairies



Hero Mart



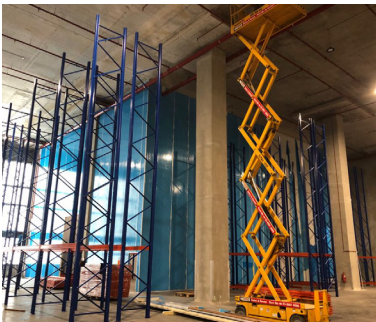
Hospital Selayang



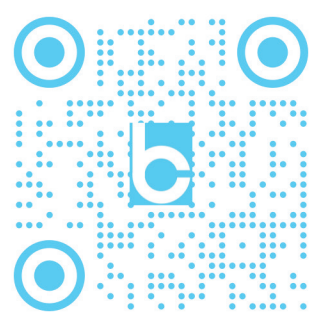
Eusu Logistic



Sunnysky Products



YCH Logistics



Scan QR for more info

# COLLABORATION





# SERVICE THAT ELEVATES YOUR BUSINESS

## WORK PROCESS



Consultancy



Site Survey



Design



Installation



Commissioning



Handover



Service and  
Maintenance







## EXTENSIVE SERVICE



### Responsive support team

Our customer support response team is active on multiple contact platforms: WhatsApp, direct line or email.

enquiry@chongbrothers.com.my  
Tel: +603-6094 1311  
Mobile: +6017-638 3277



### 48 hours technical support

Our response team will get back to you within 48 hours from the time issue has been raised.



### Repair service

We provide cold and freezer room repair service. Door frame and accessories are available as well.  
\*Cold room accessories only.



### Refrigerator system service & warranty services

We accept used refrigerator repair job and warranty for our customer will be briefed from case to case.



### Inbound technical team

Our in-house technical team is on standby 24-7.



### Professional consultation

We provide experienced and well-trained consultants to attend to your queries.

# RELIABLE EFFICIENT SUPERIOR

## Chong Brothers Panel System Sdn Bhd

[RCI Park] No.40, Jalan Kesidang 1,  
Kawasan Perindustrian Sg.Choh,  
48200 Serendah Selangor.

[enquiry@chongbrothers.com.my](mailto:enquiry@chongbrothers.com.my)

Tel: +603-6094 1311 | Mobile: +6017-638 3277

[www.chongbrothers.com.my](http://www.chongbrothers.com.my)

